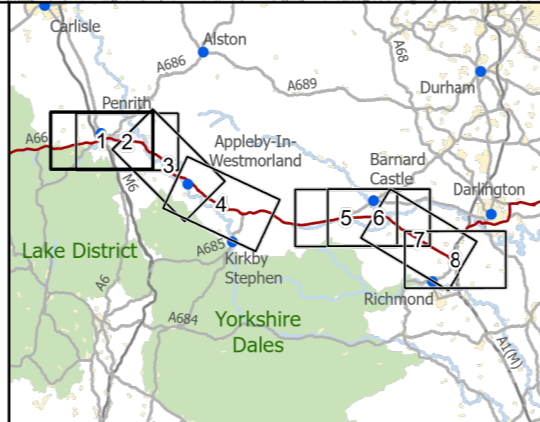


- Existing A66
- Order Limits
- Study Area 3km
- Viewpoint
- Viewpoint (Photomontage)
- Assessed View
- Public Rights of Way
- Areas Theoretically Visible from Existing A66 (HGV 4.7m) (2m DSM)
- Areas Theoretically Newly Visible from Scheme (HGV 4.7m) (2m DSM)



national highways

3 Piccadilly Place
Manchester
M1 3BN

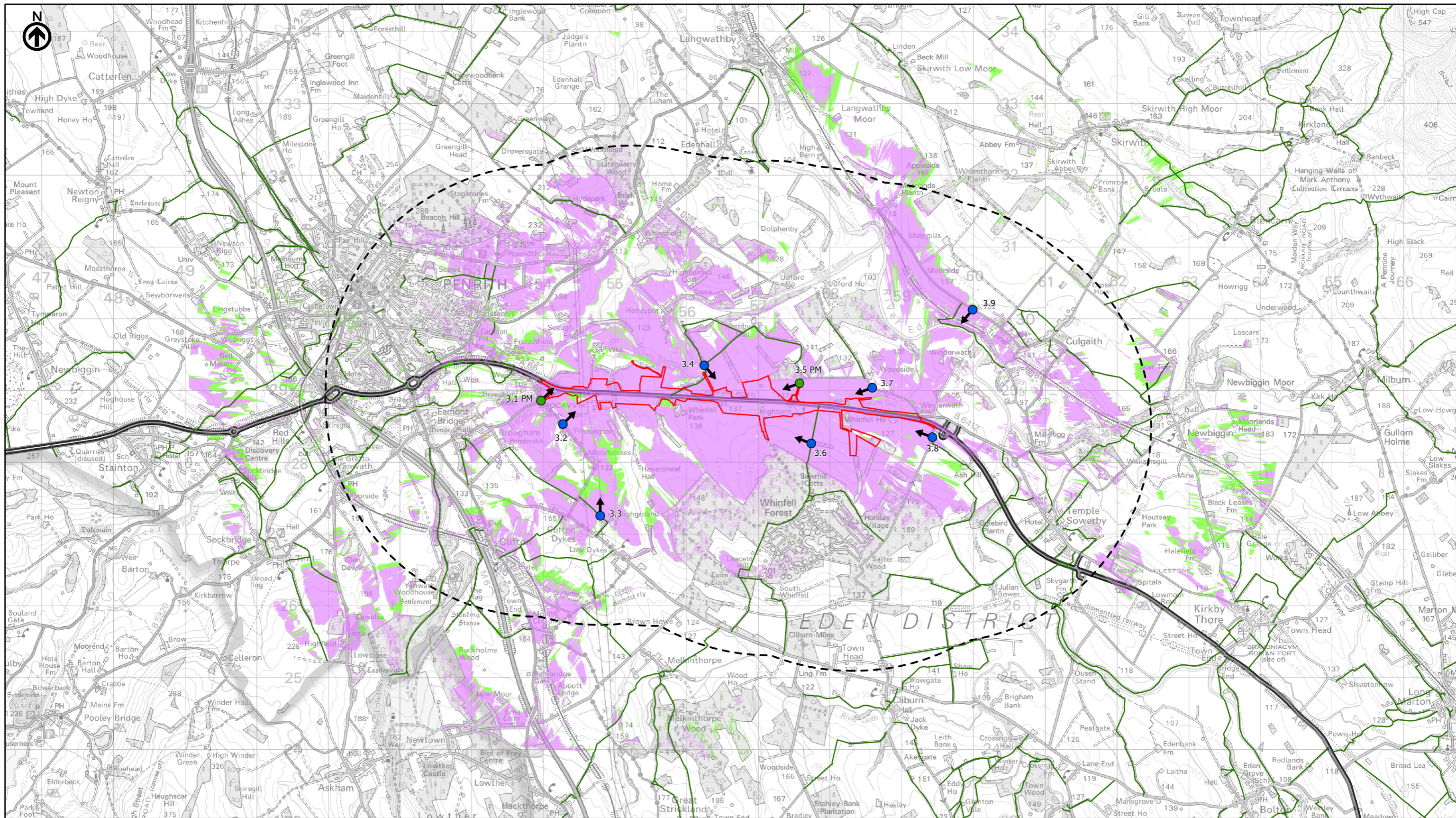
P02	First Issue	PKELL	CESL	JSIM	AMIT	KWHA
		17/03/22	17/03/22	17/03/22	20/04/22	20/04/22
Revision	Created	Checked	Reviewed	Approved	Authorised	

Kilometres

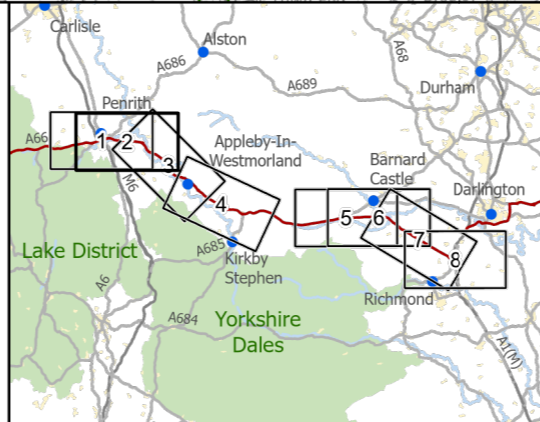
0 2 4

Scale @ A3: 1:50,000 | Project Ref No HE565627 | Stage: Stage 3
© Crown copyright and database rights (2022). All rights reserved. OS 100030649.
Contains public sector information licensed under the Open Government Licence v3.0.
Digital Surface Model - ©Astrium Ltd and Bluesky International Ltd

Project Name A66 Northern Trans-Pennine Project			
Map Title Figure 10.4 Zone of Theoretical Visibility (ZTV 3km) and Viewpoints Scheme: 0102, M6 Junction 40 to Kemplay Bank Sheet 1 of 8			
Map Number Project	Originator	Volume	
HE565627	AMY	ELS	
S00 Location	MP	LL	006072
Suitability S4	Suitability Description FIT FOR STAGE APPROVAL	Revision P02	



- Existing A66
- Order Limits
- Study Area 3km
- Viewpoint
- Viewpoint (Photomontage)
- Assessed View
- Public Rights of Way
- Areas Theoretically Visible from Existing A66 (HGV 4.7m) (2m DSM)
- Areas Theoretically Newly Visible from Scheme (HGV 4.7m) (2m DSM)



national highways

3 Piccadilly Place
Manchester
M1 3BN

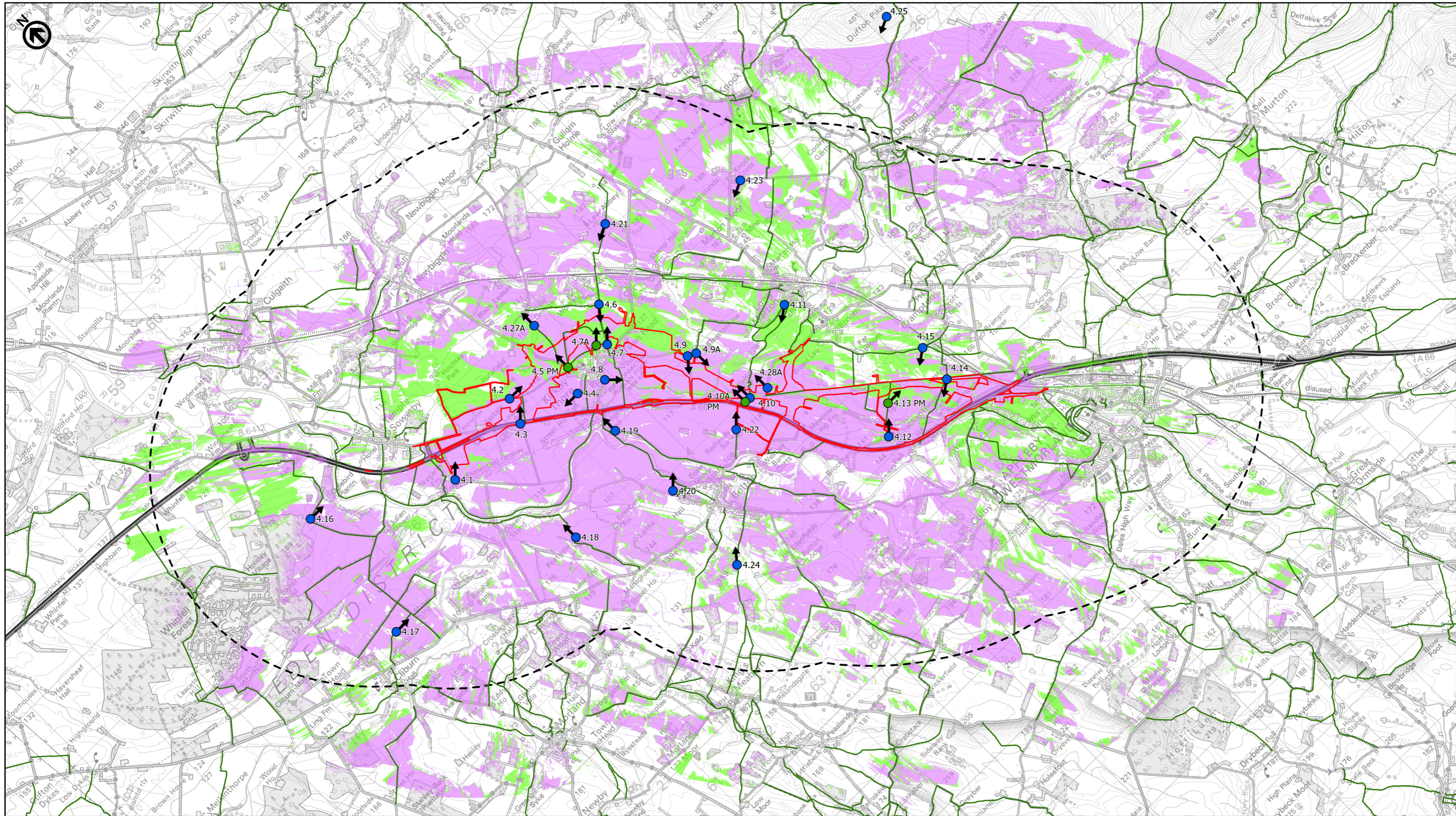
P02	First Issue	CESL	JSIM	AMIT	KWHA
	17/03/22	17/03/22	17/03/22	20/04/22	20/04/22
Revision	Created	Checked	Reviewed	Approved	Authorised

Kilometres

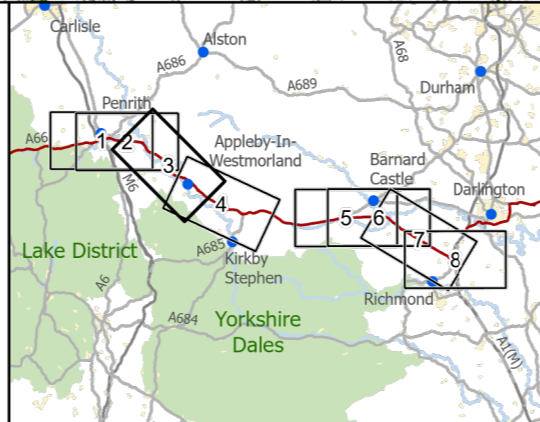
0 2 4

Scale @ A3: 1:50,000 | Project Ref No HE565627 | Stage: Stage 3
© Crown copyright and database rights (2022). All rights reserved. OS 100030649.
Contains public sector information licensed under the Open Government Licence v3.0.
Digital Surface Model - ©Astrium Ltd and Bluesky International Ltd

Project Name A66 Northern Trans-Pennine Project			
Map Title Figure 10.4 Zone of Theoretical Visibility (ZTV 3km) and Viewpoints Scheme: 03, Penrith to Temple Sowerby Sheet 2 of 8			
Map Number Project	Originator	Volume	
HE565627	AMY	ELS	
S00	- MP - LL -	006073	
Location	Type	Role	Number
Suitability S4	Suitability Description FIT FOR STAGE APPROVAL	Revision P02	



- Existing A66
- Order Limits
- Study Area 3km
- Viewpoint
- Viewpoint (Photomontage)
- Assessed View
- Public Rights of Way
- Areas Theoretically Visible from Existing A66 (HGV 4.7m) (2m DSM)
- Areas Theoretically Newly Visible from Scheme (HGV 4.7m) (2m DSM)



national highways 3 Piccadilly Place
Manchester M1 3BN

P02	First Issue	CESL	JSIM	AMIT	KWHA
	17/03/22	17/03/22	17/03/22	20/04/22	20/04/22
Revision	Created	Checked	Reviewed	Approved	Authorised

Kilometres
0 2 4

Scale @ A3: 1:50,000 | Project Ref No HE565627 | Stage: Stage 3
© Crown copyright and database rights (2022). All rights reserved. OS 100030649.
Contains public sector information licensed under the Open Government Licence v3.0.
Digital Surface Model - ©Astrium Ltd and Bluesky International Ltd

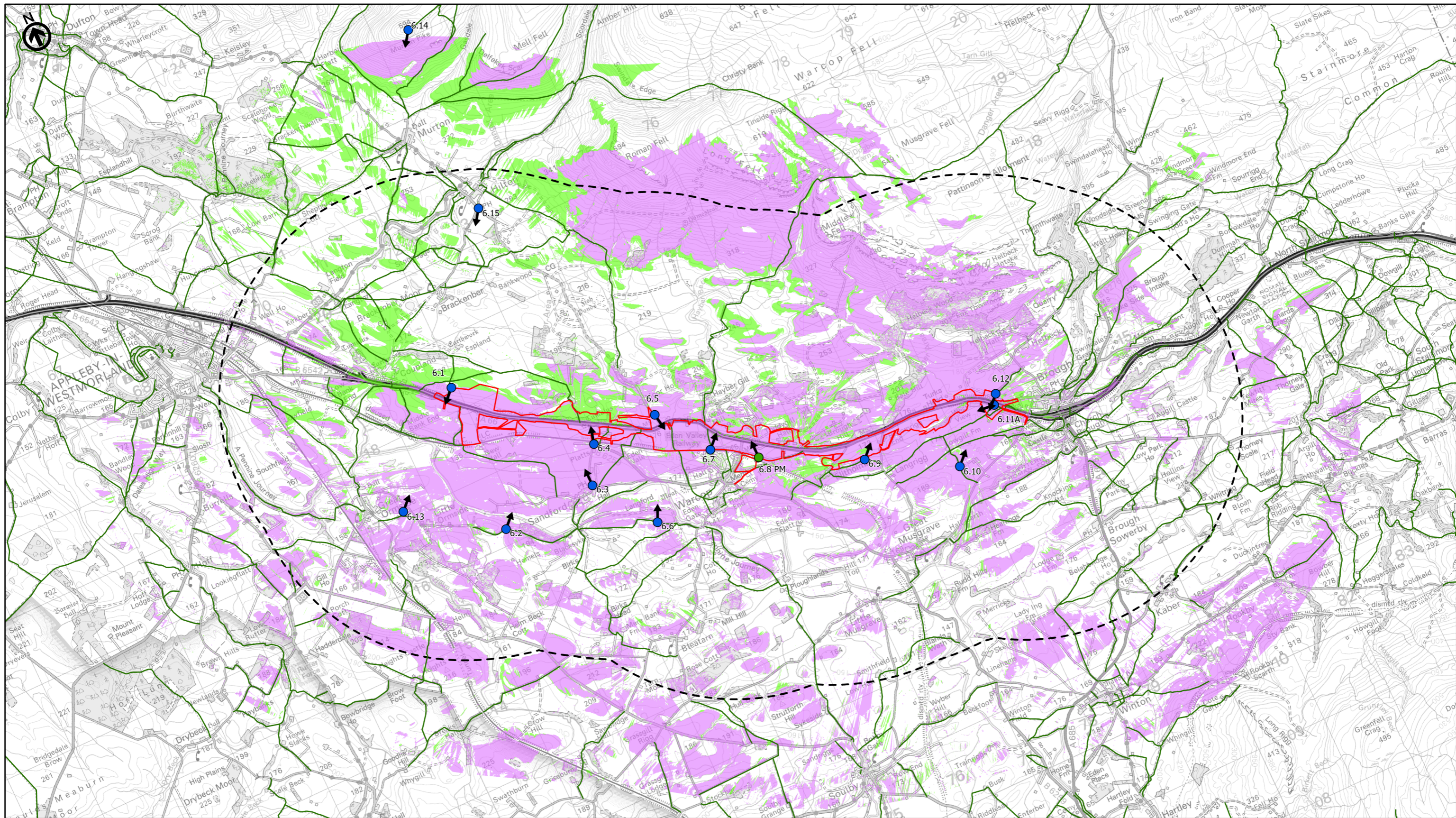
Project Name
A66 Northern Trans-Pennine Project

Map Title
Figure 10.4

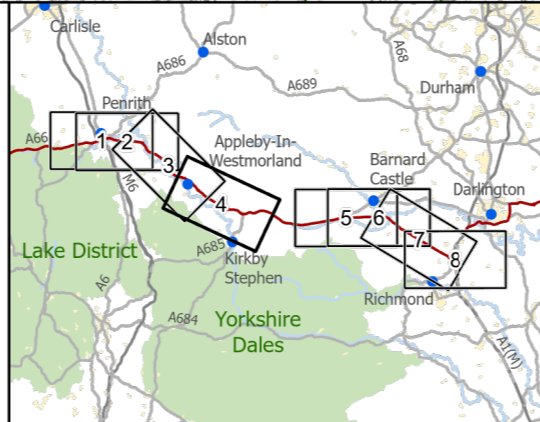
Zone of Theoretical Visibility (ZTV 3km) and Viewpoints
Scheme: 0405, Temple Sowerby to Appleby
Sheet 3 of 8

Map Number	Project	Originator	Volume
HE565627	-	AMY	ELS
S00	-	MP	LL
Location	Type	Role	Number
S4	FIT FOR STAGE APPROVAL		P02

Suitability S4 | Suitability Description FIT FOR STAGE APPROVAL | Revision P02



- Existing A66
- Order Limits
- Study Area 3km
- Viewpoint
- Viewpoint (Photomontage)
- Assessed View
- Public Rights of Way
- Areas Theoretically Visible from Existing A66 (HGV 4.7m) (2m DSM)
- Areas Theoretically Newly Visible from Scheme (HGV 4.7m) (2m DSM)



national highways

3 Piccadilly Place
Manchester
M1 3BN

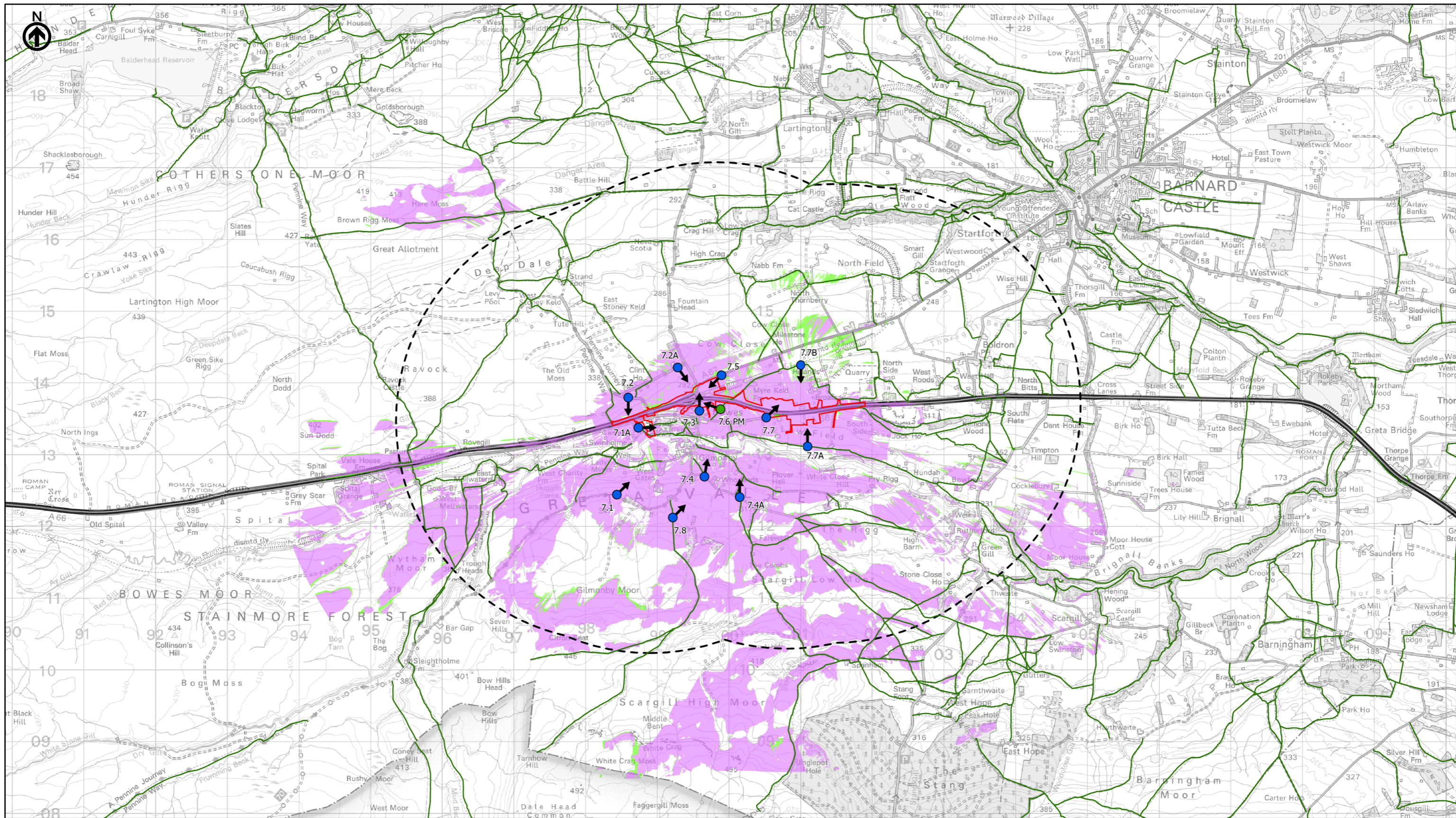
P02	First Issue				
	PKELL	CESL	JSIM	AMIT	KWHA
	17/03/22	17/03/22	17/03/22	20/04/22	20/04/22
Revision	Created	Checked	Reviewed	Approved	Authorised

Kilometres

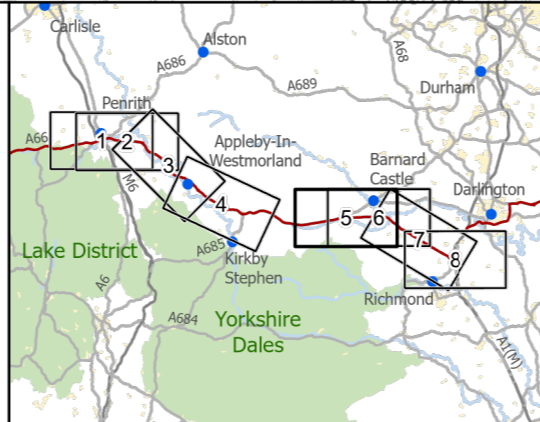
0 2 4

Scale @ A3: 1:50,000 | Project Ref No HE565627 | Stage: Stage 3
 © Crown copyright and database rights (2022). All rights reserved. OS 100030649.
 Contains public sector information licensed under the Open Government Licence v3.0.
 Digital Surface Model - ©Astrium Ltd and Bluesky International Ltd

Project Name A66 Northern Trans-Pennine Project			
Map Title Figure 10.4			
Zone of Theoretical Visibility (ZTV 3km) and Viewpoints			
Scheme: 06, Appleby to Brough			
Sheet 4 of 8			
Map Number	Project	Originator	Volume
HE565627	-	AMY	-
S00	-	MP	-
Location	Type	Role	Number
S4	FIT FOR STAGE APPROVAL		006075
Suitability	Suitability Description	Revision	
S4	FIT FOR STAGE APPROVAL	P02	



- Existing A66
- Order Limits
- Study Area 3km
- Viewpoint
- Viewpoint (Photomontage)
- Assessed View
- Public Rights of Way
- Areas Theoretically Visible from Existing A66 (HGV 4.7m) (2m DSM)
- Areas Theoretically Newly Visible from Scheme (HGV 4.7m) (2m DSM)



national highways

3 Piccadilly Place
Manchester
M1 3BN

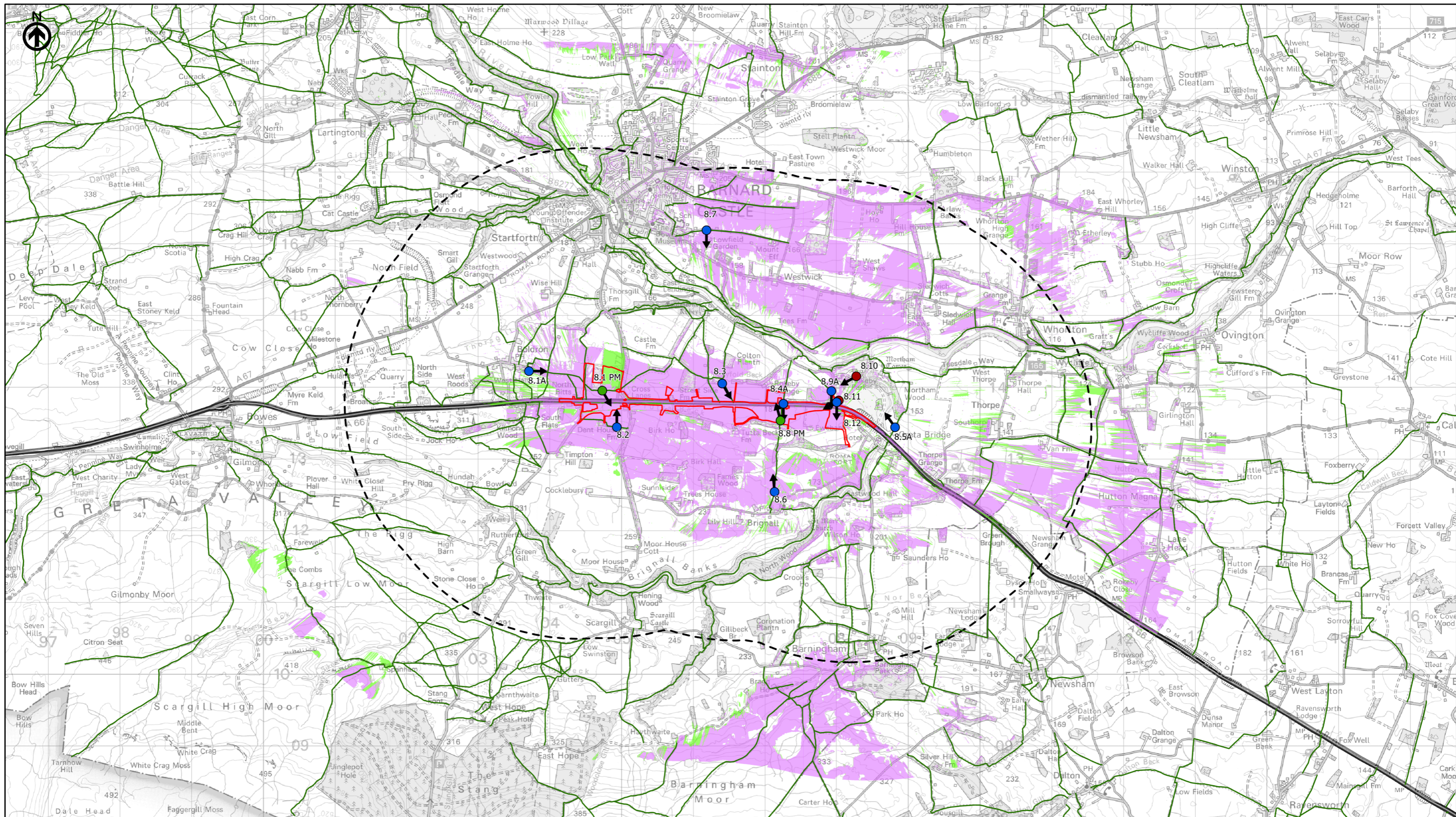
P02	First Issue	PKELL	CESL	JSIM	AMIT	KWA
		17/03/22	17/03/22	17/03/22	20/04/22	20/04/22
Revision	Created	Checked	Reviewed	Approved	Authorised	

Kilometres

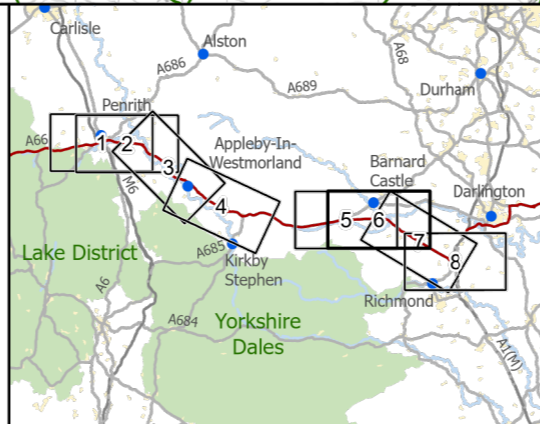
0 2 4

Scale @ A3: 1:50,000 | Project Ref No HE565627 | Stage: Stage 3
© Crown copyright and database rights (2022). All rights reserved. OS 100030649.
Contains public sector information licensed under the Open Government Licence v3.0.
Digital Surface Model - ©Astrium Ltd and Bluesky International Ltd

Project Name A66 Northern Trans-Pennine Project			
Map Title Figure 10.4			
Zone of Theoretical Visibility (ZTV 3km) and Viewpoints			
Scheme: 07, Bowes Bypass			
Sheet 5 of 8			
Map Number Project	Originator	Volume	
HE565627	AMY	ELS	
S00	-	MP - LL -	006076
Location	Type	Role	Number
Suitability S4	Suitability Description FIT FOR STAGE APPROVAL	Revision P02	



- Existing A66
- Order Limits
- Study Area 3km
- Viewpoint
- Viewpoint (Photomontage)
- Assessed View
- Public Rights of Way
- Areas Theoretically Visible from Existing A66 (HGV 4.7m) (2m DSM)
- Areas Theoretically Newly Visible from Scheme (HGV 4.7m) (2m DSM)



national highways

3 Piccadilly Place
Manchester
M1 3BN

P02	First Issue				
	PKELL	CESL	JSIM	AMIT	KWHA
	17/03/22	17/03/22	17/03/22	20/04/22	20/04/22
Revision	Created	Checked	Reviewed	Approved	Authorised

Kilometres

0 2 4

Scale @ A3: 1:50,000 | Project Ref No HE565627 | Stage: Stage 3
 © Crown copyright and database rights (2022). All rights reserved. OS 100030649.
 Contains public sector information licensed under the Open Government Licence v3.0.
 Digital Surface Model - ©Astrium Ltd and Bluesky International Ltd

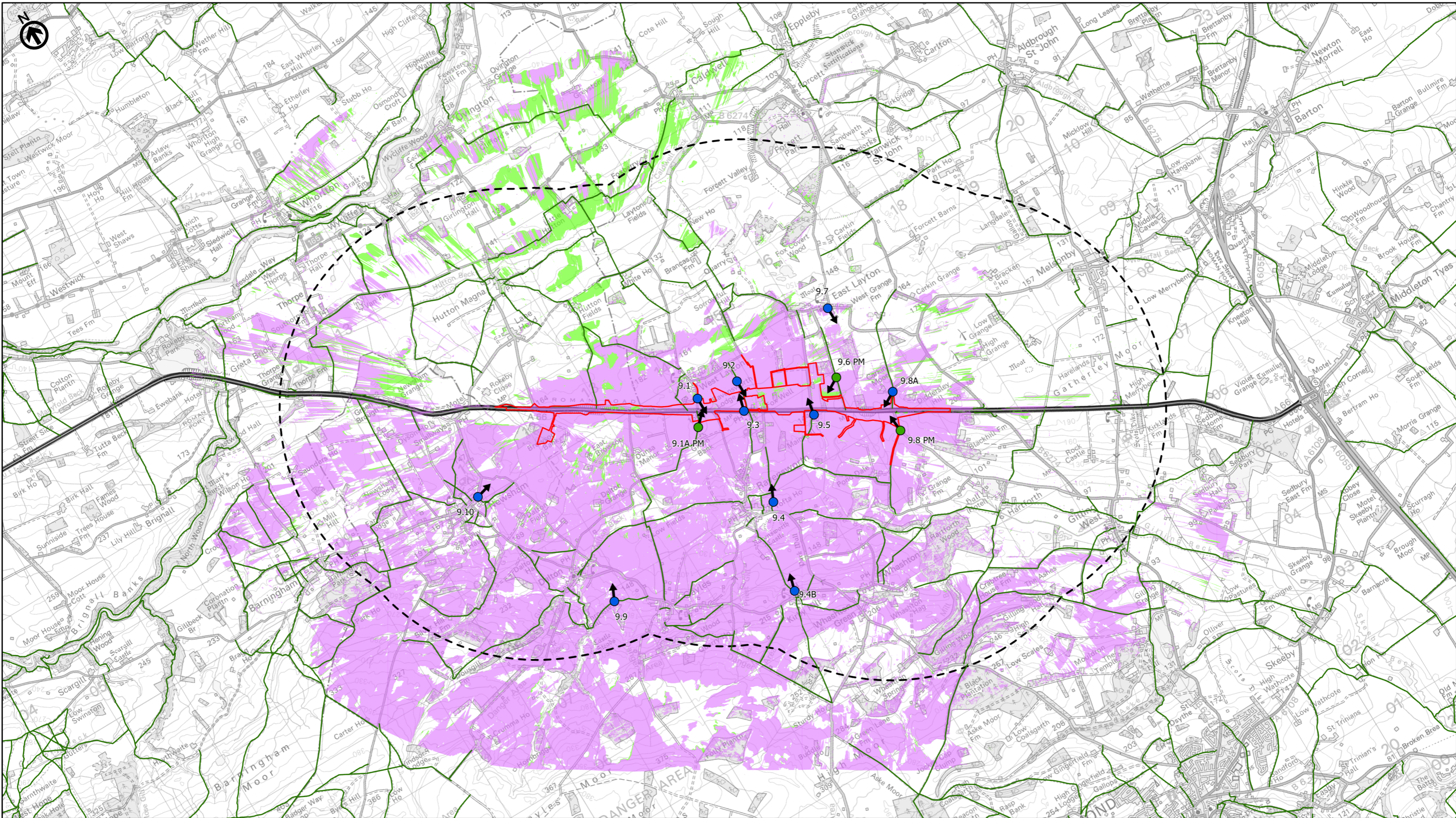
Project Name
A66 Northern Trans-Pennine Project

Map Title
Figure 10.4

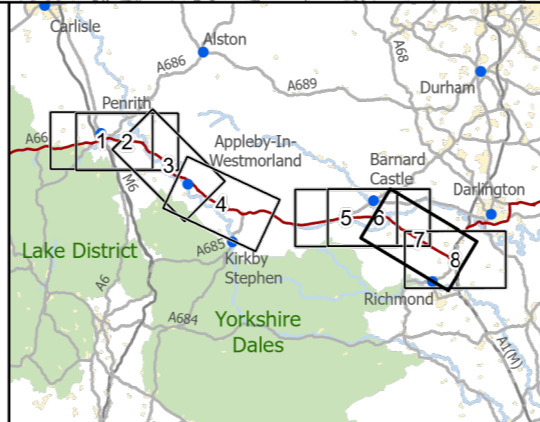
Zone of Theoretical Visibility (ZTV 3km) and Viewpoints
Scheme: 08, Cross Lanes to Rokeby
Sheet 6 of 8

Map Number	Project	Originator	Volume
HE565627	-	AMY	- ELS
S00	-	MP - LL	- 006077
Location		Type	Role

Suitability	Suitability Description	Revision
S4	FIT FOR STAGE APPROVAL	P02



- Existing A66
- Order Limits
- Study Area 3km
- Viewpoint
- Viewpoint (Photomontage)
- Assessed View
- Public Rights of Way
- Areas Theoretically Visible from Existing A66 (HGV 4.7m) (2m DSM)
- Areas Theoretically Newly Visible from Scheme (HGV 4.7m) (2m DSM)



national highways

3 Piccadilly Place
Manchester
M1 3BN

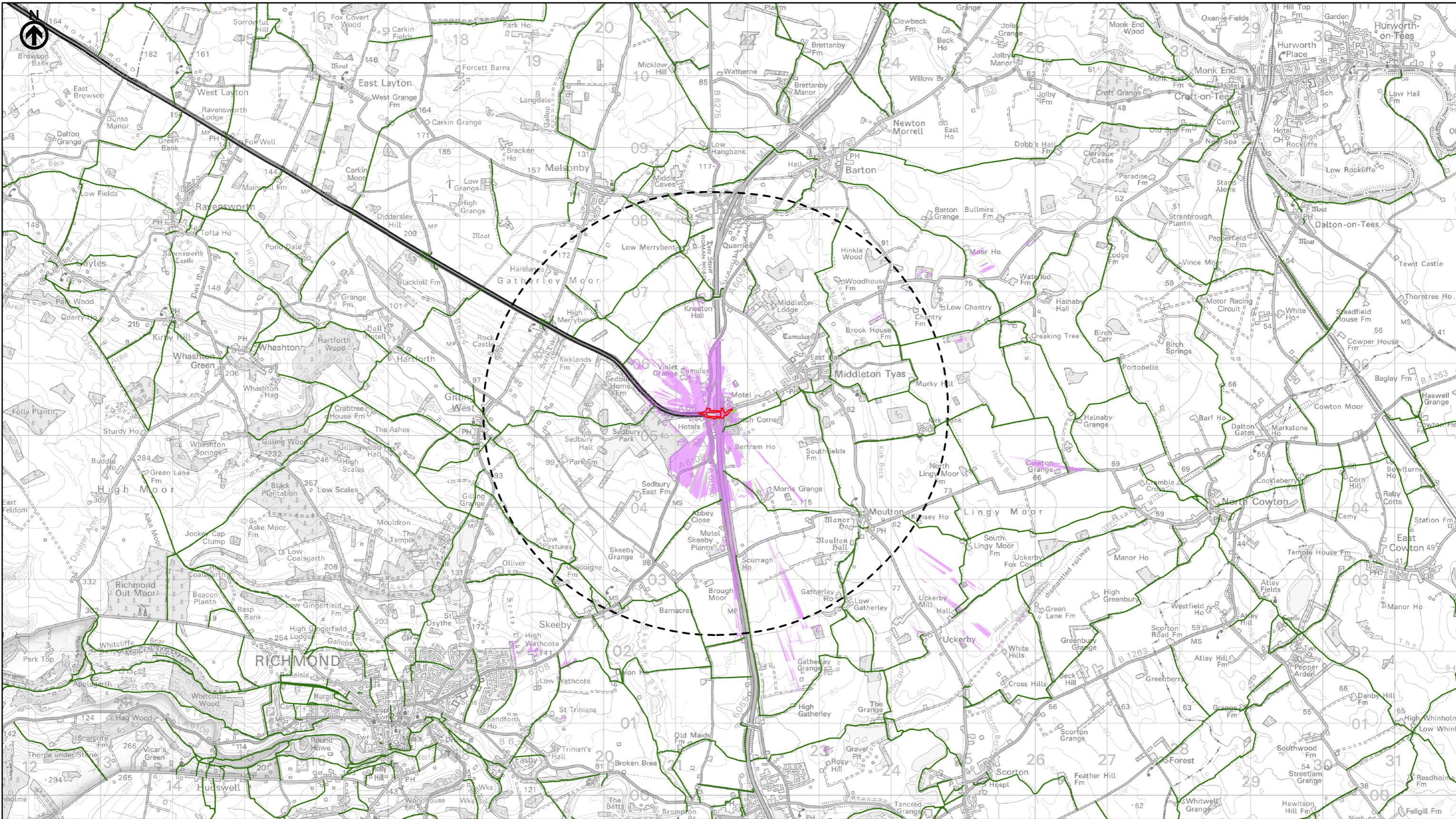
P02	First Issue	CESL	JSIM	AMIT	KWHA
	17/03/22	17/03/22	17/03/22	20/04/22	20/04/22
Revision	Created	Checked	Reviewed	Approved	Authorised

Kilometres

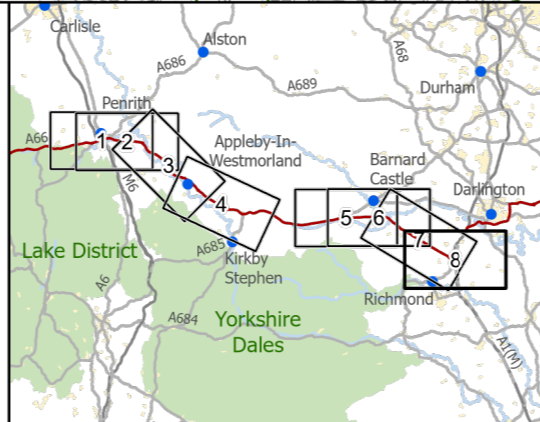
0 ————— 2 ————— 4

Scale @ A3: 1:50,000 | Project Ref No HE565627 | Stage: Stage 3
 © Crown copyright and database rights (2022). All rights reserved. OS 100030649.
 Contains public sector information licensed under the Open Government Licence v3.0.
 Digital Surface Model - ©Astrium Ltd and Bluesky International Ltd

Project Name A66 Northern Trans-Pennine Project			
Map Title Figure 10.4			
Zone of Theoretical Visibility (ZTV 3km) and Viewpoints			
Scheme: 09, Stephen Bank to Carkin Moor			
Sheet 7 of 8			
Map Number	Project	Originator	Volume
HE565627	-	AMY	-
S00	-	MP	-
Location	Type	Role	Number
S4	FIT FOR STAGE APPROVAL		006078
Suitability	Suitability Description	Revision	
S4	FIT FOR STAGE APPROVAL	P02	



- Existing A66
- Order Limits
- Study Area 3km
- Viewpoint
- Viewpoint (Photomontage)
- Assessed View
- Public Rights of Way
- Areas Theoretically Visible from Existing A66 (HGV 4.7m) (2m DSM)
- Areas Theoretically Newly Visible from Scheme (HGV 4.7m) (2m DSM)



national highways

3 Piccadilly Place
Manchester
M1 3BN

P02	First Issue	PKELL	CESL	JSIM	AMIT	KWA
		17/03/22	17/03/22	17/03/22	20/04/22	20/04/22
Revision	Created	Checked	Reviewed	Approved	Authorised	

Kilometres

0 2 4

Scale @ A3: 1:50,000 | Project Ref No HE565627 | Stage: Stage 3
© Crown copyright and database rights (2022). All rights reserved. OS 100030649.
Contains public sector information licensed under the Open Government Licence v3.0.
Digital Surface Model - ©Astrium Ltd and Bluesky International Ltd

Project Name A66 Northern Trans-Pennine Project			
Map Title Figure 10.4			
Zone of Theoretical Visibility (ZTV 3km) and Viewpoints			
Scheme: 11, A1(M) Junction 53 Scotton			
Sheet 8 of 8			
Map Number Project	Originator	Volume	
HE565627	AMY	ELS	
S00	-	MP - LL	- 006079
Location	Type	Role	Number
Suitability S4	Suitability Description FIT FOR STAGE APPROVAL		Revision P02